

Centre No.						Paper Reference					Surname	Initial(s)		
Candidate No.						6	6	7	9	/	0	1	Signature	

Paper Reference(s)

6679/01

Edexcel GCE

Mechanics M3

Advanced/Advanced Subsidiary

Tuesday 15 June 2010 – Morning

Time: 1 hour 30 minutes

Examiner's use only

--	--	--

Team Leader's use only

--	--	--

Materials required for examination

Mathematical Formulae (Pink)

Items included with question papers

Nil

Candidates may use any calculator allowed by the regulations of the Joint Council for Qualifications. Calculators must not have the facility for symbolic algebra manipulation, differentiation and integration, or have retrievable mathematical formulae stored in them.

Question Number	Leave Blank
1	
2	
3	
4	
5	
6	
7	
Total	

Instructions to Candidates

In the boxes above, write your centre number, candidate number, your surname, initials and signature. Check that you have the correct question paper. Answer ALL the questions. You must write your answer to each question in the space following the question. Whenever a numerical value of g is required, take $g = 9.8 \text{ m s}^{-2}$. When a calculator is used, the answer should be given to an appropriate degree of accuracy.

Information for Candidates

A booklet 'Mathematical Formulae and Statistical Tables' is provided. Full marks may be obtained for answers to ALL questions. The marks for individual questions and the parts of questions are shown in round brackets: e.g. (2). There are 7 questions in this question paper. The total mark for this paper is 75. There are 28 pages in this question paper. Any blank pages are indicated.

Advice to Candidates

You must ensure that your answers to parts of questions are clearly labelled. You should show sufficient working to make your methods clear to the Examiner. Answers without working may not gain full credit.

This publication may be reproduced only in accordance with Edexcel Limited copyright policy.
©2010 Edexcel Limited.

Printer's Log. No.

N35392A

W850/R6679/57570 4/5/3



N 3 5 3 9 2 A 0 1 2 8

Turn over

edexcel
advancing learning, changing lives

1.

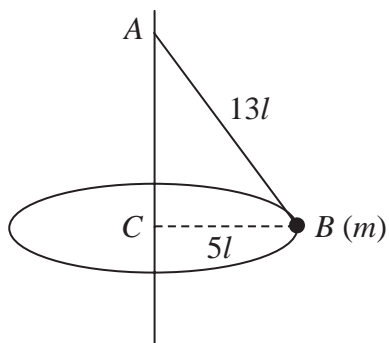


Figure 1

A garden game is played with a small ball B of mass m attached to one end of a light inextensible string of length $13l$. The other end of the string is fixed to a point A on a vertical pole as shown in Figure 1. The ball is hit and moves with constant speed in a horizontal circle of radius $5l$ and centre C , where C is vertically below A . Modelling the ball as a particle, find

(a) the tension in the string, (3)

(b) the speed of the ball. (4)



3.

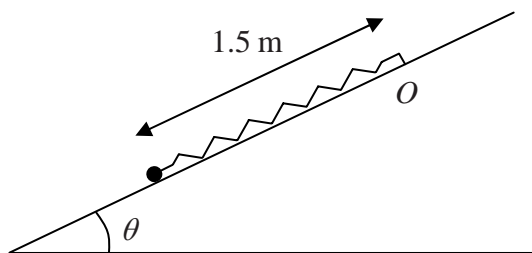


Figure 2

A particle of mass 0.5 kg is attached to one end of a light elastic spring of natural length 0.9 m and modulus of elasticity λ newtons. The other end of the spring is attached to a fixed point O on a rough plane which is inclined at an angle θ to the horizontal, where $\sin \theta = \frac{3}{5}$. The coefficient of friction between the particle and the plane is 0.15. The particle is held on the plane at a point which is 1.5 m down the line of greatest slope from O , as shown in Figure 2. The particle is released from rest and first comes to rest again after moving 0.7 m up the plane.

Find the value of λ .

(9)



4.

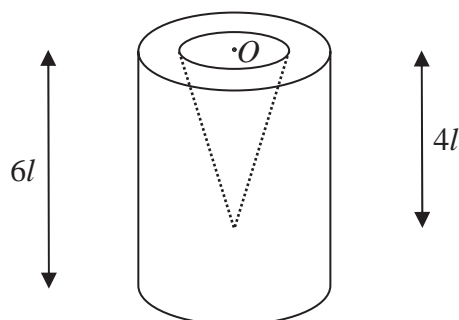


Figure 3

A container is formed by removing a right circular solid cone of height $4l$ from a uniform solid right circular cylinder of height $6l$. The centre O of the plane face of the cone coincides with the centre of a plane face of the cylinder and the axis of the cone coincides with the axis of the cylinder, as shown in Figure 3. The cylinder has radius $2l$ and the base of the cone has radius l .

(a) Find the distance of the centre of mass of the container from O .

(6)

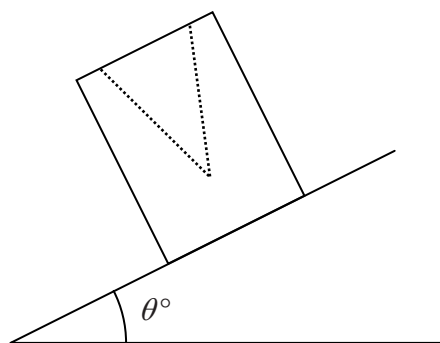


Figure 4

The container is placed on a plane which is inclined at an angle θ° to the horizontal. The open face is uppermost, as shown in Figure 4. The plane is sufficiently rough to prevent the container from sliding. The container is on the point of toppling.

(b) Find the value of θ .

(4)



5.

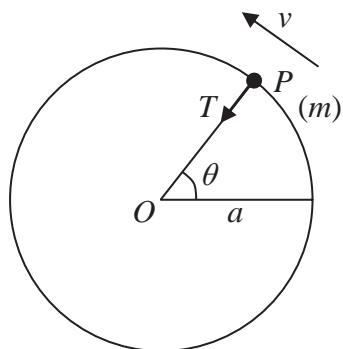


Figure 5

A particle P of mass m is attached to one end of a light inextensible string of length a . The other end of the string is fixed at the point O . The particle is initially held with OP horizontal and the string taut. It is then projected vertically upwards with speed u , where $u^2 = 5ag$. When OP has turned through an angle θ the speed of P is v and the tension in the string is T , as shown in Figure 5.

(a) Find, in terms of a , g and θ , an expression for v^2 . (3)

(b) Find, in terms of m , g and θ , an expression for T . (4)

(c) Prove that P moves in a complete circle. (3)

(d) Find the maximum speed of P . (2)



Leave
blank

Question 6 continued

Lined area for writing the answer to Question 6.



N 3 5 3 9 2 A 0 2 1 2 8

Leave blank

7. A light elastic string, of natural length $3a$ and modulus of elasticity $6mg$, has one end attached to a fixed point A . A particle P of mass $2m$ is attached to the other end of the string and hangs in equilibrium at the point O , vertically below A .

(a) Find the distance AO . (3)

The particle is now raised to point C vertically below A , where $AC > 3a$, and is released from rest.

(b) Show that P moves with simple harmonic motion of period $2\pi\sqrt{\left(\frac{a}{g}\right)}$. (5)

It is given that $OC = \frac{1}{4}a$.

(c) Find the greatest speed of P during the motion. (3)

The point D is vertically above O and $OD = \frac{1}{8}a$. The string is cut as P passes through D , moving upwards.

(d) Find the greatest height of P above O in the subsequent motion. (4)



